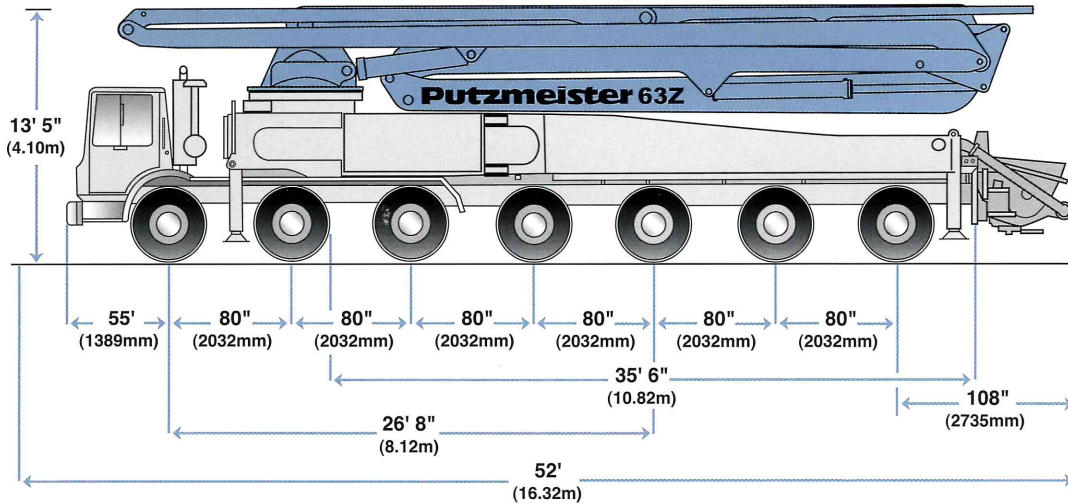
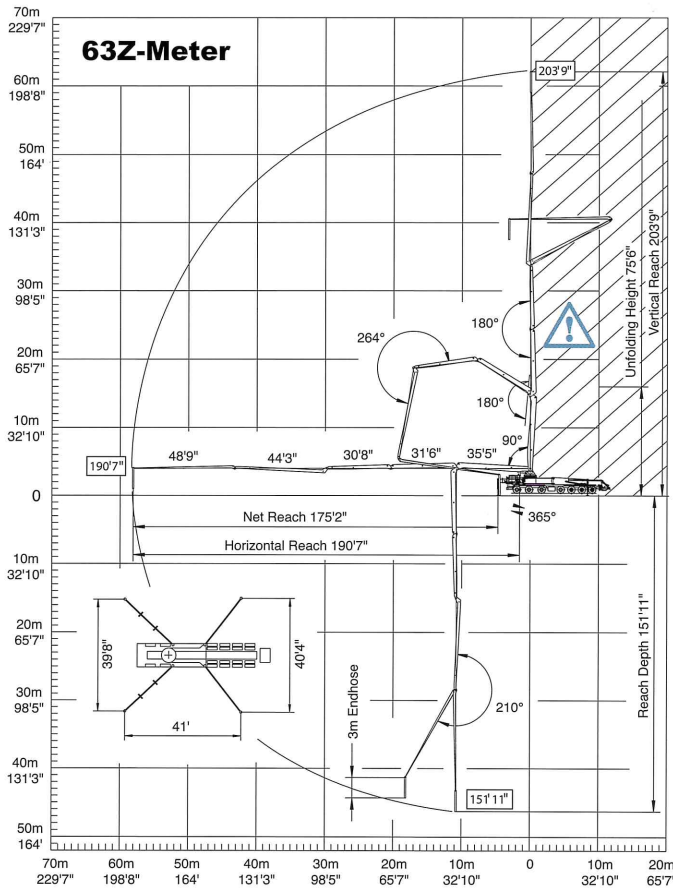


63Z-Meter Specifications

63Z-Meter



Range Diagram



The Putzmeister 63Z-Meter offers:

- The world's largest boom pump
- Over 200 feet (63m) of vertical reach
- Versatile 5-section Z-boom design
- EPS - Ergonic® Pump Control System allows operator to set pump parameters as well as view and change functions from a modular control box with LCD screen
- EOC - Ergonic® Output Control ensures optimum engine RPM, lowest possible fuel consumption, and reduced wear and noise levels
- EBC - Ergonic® Boom Control features OneTouch™ which uses a single joystick to move all boom sections and slewing in tandem, while keeping the end hose level
- Modular flat pack and hydraulic system provide greater component access
- Rugged 900 Series hopper with "Big Mouth" S-Valve

For more information on how this innovative new boom can be an effective part of your fleet, please contact your **Putzmeister representative** or authorized **Putzmeister distributor**.

Tor 7-axle chassis shown. Mack 688S chassis also available.

End hose not to be operated in caution area.

Authorized Distributor



Putzmeister America
1733 90th Street
Sturtevant, WI 53177 USA
Telephone (262) 886-3200
(800) 884-7210
Facsimile (262) 884-6338
www.putzmeister.com

