

Specifications

38X-Meter Concrete Pump

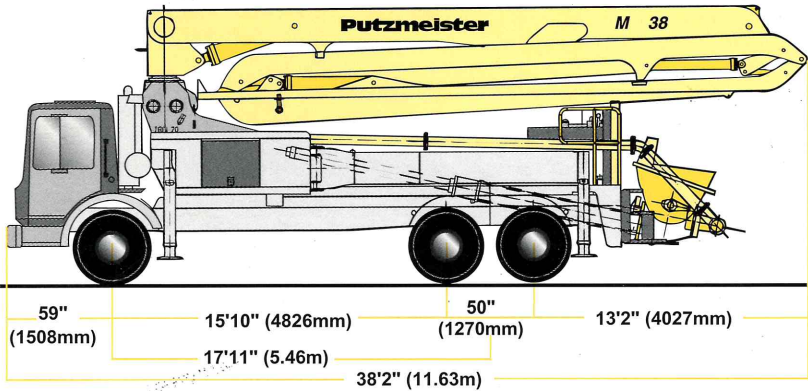
Truck-Mounted Specifications

Based on Model Mack MR688S

Length	38'2"	(11.63m)
Width	8'2"	(2.50m)
Height	13'1"	(3.98m)
Wheelbase	215"	(5461mm)
Front axle weight	19,229 lbs	(8,721kg)
Rear axle weight	35,812 lbs	(16,242kg)
Approx total weight	55,041 lbs	(24,963kg)

Weights are approximate and include pump, boom, truck, full hydraulic oil, driver and full fuel. Varies with options selected.

Dimensions will vary with different truck makes, models and specifications.



Boom Specifications • Roll and Fold Design

Height & Reach

Vertical reach	124'3"	(37.9m)
Horizontal reach	111'0"	(33.8m)
Reach from front of truck*	103'6"	(31.1m)
Reach depth	84'0"	(25.6m)
Unfolding height	29'6"	(9.0m)

4-Section Boom

1st section articulation	92°	
2nd section articulation	180°	
3rd section articulation	180°	
4th section articulation	247°	
1st section length	28'7"	(8.7m)
2nd section length	25'11"	(7.9m)
3rd section length	27'6"	(8.4m)
4th section length	29'0"	(8.8m)

General Specs

Pipeline size (ID) metric ends	5"	(125mm)
with couplings	5.5"	(140mm)
Rotation	365°	
End hose-length (heavy duty)	10'	(3m)
End hose-diameter	5"	(125mm)
Outrigger spread L-R-front	20'8"	(6.30m)
telescopic diagonal		
Outrigger spread L-R-rear	23'	(7.0m)
swing-out		

Pump Specifications

38.16H

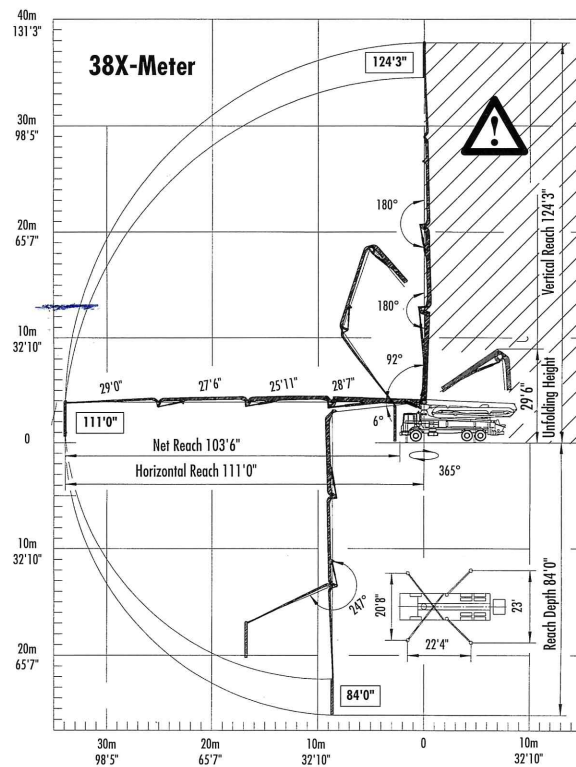
38.20H

Output- rod side	210 yd ³ /hr (160m ³ /hr)	—
piston side	146 yd ³ /hr (112m ³ /hr)	260 yd ³ /hr (200m ³ /hr)
Pressure- rod side	1233 psi (85 bar)	—
piston side	1885 psi* (130 bar)*	1233 psi* (85 bar)*
Concrete cylinder diameter	9" (230mm)	11" (280mm)
Stroke length	83" (2100mm)	83" (2100mm)
Max strokes per minute-		
rod side	31	—
piston side	21	28
Volume control	0-Full	0-Full
Vibrator	Standard	Standard
Hard chromed concrete cylinders	Standard	Standard
Hydraulic system	Free Flow	Free Flow
Hydraulic system pressure	5075 psi (350 bar)	5075 psi (350bar)
Differential cylinder diameter	5.5" (140mm)	5.5" (140mm)
Rod diameter	3.1" (80mm)	3.1" (80mm)
Maximum size aggregate	2.5" (63mm)	2.5" (63mm)
Water Tank	185 gal (700L)	185 gal (700L)

Maximum theoretical values listed.

* Applies to units mounted on Mack MR688S

• Standard delivery line system rated at max line pressure of 1233 psi (85 bar)



End hose not to be operated in caution area.



Putzmeister America
1733 90th Street
Sturtevant
Wisconsin 53177 USA

Telephone (262) 886-3200
(800) 884-7210
Facsimile (262) 884-6338
www.putzmeister.com

Right to make technical amendments reserved.