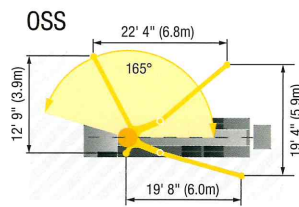
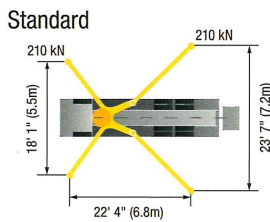
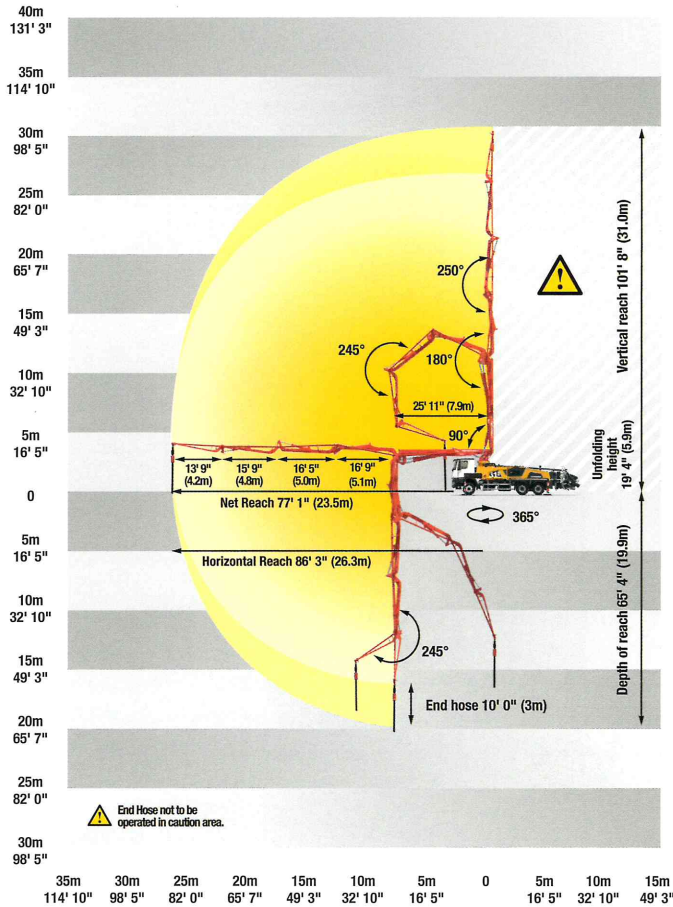


31Z-Meter Range Diagram



31Z-Meter Truck-Mounted Specifications

Length	35' 7"	(10.85m)
Width	8' 2"	(2.50m)
Height	12' 9"	(3.90m)
Wheelbase	198"	(5,029mm)
Front axle weight	19,200 lbs	(8,709kg)
Rear axle weight	37,040 lbs	(16,801kg)
Approx total weight	56,240 lbs	(25,510kg)

Based on Model MACK MRU 613 with .16H pump cell.

Weights are approximate and include pump, boom, truck, driver and full fuel tank.

Varies with options selected.

Dimensions will vary with different truck makes, models and specifications.

Boom Specifications | Z-Fold Design

Height & Reach

Vertical reach	101' 8"	(31.0m)
Horizontal reach	86' 3"	(26.3m)
Reach from front of truck*	77' 1"	(23.5m)
Reach depth	65' 4"	(19.9m)
Unfolding height	19' 4"	(5.9m)

5-Section Boom

1st section articulation	90°
2nd section articulation	180°
3rd section articulation	250°
4th section articulation	245°
5th section articulation	245°

1st section length	25' 11"	(7.9m)
2nd section length	16' 9"	(5.1m)
3rd section length	16' 5"	(5.0m)
4th section length	15' 9"	(4.8m)
5th section length	13' 9"	(4.2m)

General Specifications

Pipeline Size (ID) metric ends	5"	(125mm)
Rotation	365°	
End hose — length	10' 0"	(3.00m)
End hose — diameter	5"	(125mm)
Outrigger spread L-R — front	18' 1"	(5.5m)
Outrigger spread L-R — rear	23' 7"	(7.2m)

Pump Specifications

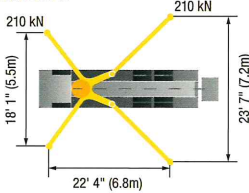
	31Z.12H	31Z.16H
Output — rod side	144 yd ³ /hr (110m ³ /hr)	210 yd ³ /hr (160m ³ /hr)
— piston side	97 yd ³ /hr (74m ³ /hr)	141 yd ³ /hr (108m ³ /hr)
Pressure — rod side	1,233 psi (85 bar)	1,233 psi (85 bar)
— piston side	1,885 psi (130 bar)•	1,885 psi (130 bar)•
Material cylinder diameter	9" (230mm)	9" (230mm)
Stroke length	83" (2,100mm)	83" (2,100mm)
Maximum strokes per minute		
— rod side	21	31
— piston side	14	21
Volume control	0-Full	0-Full
Vibrator	Standard	Standard
Hard-chromed material cylinders	Standard	Standard
Hydraulic system	Free Flow	Free Flow
Hydraulic system pressure	5,075 psi (350 bar)	5,075 psi (350 bar)
Differential cylinder diameter	5.1" (130mm)	5.5" (140mm)
Rod diameter	3.1" (80mm)	3.1" (80mm)
Maximum size aggregate	2.5" (63mm)	2.5" (63mm)
Water tank — pedestal	185 gal (700L)	185 gal (700L)

Maximum theoretical values listed.

* Applies to units mounted on PMA stock truck — MACK MRU 613

• Standard delivery line system rated at max line pressure of 1,233 psi (85 bar)

Standard



OSS

